

ROOF-MOUNTED INDIRECT SYSTEMS



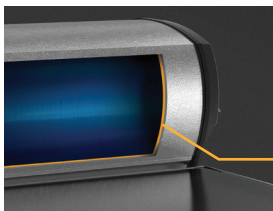
J SERIES CLOSED-CIRCUIT THERMOSIPHON



Solahart J Series is a solar water heater specifically designed to provide efficient service in medium to high solar gain areas. They utilise Solahart's multi-flow collector, which uses 35 risers to extract the maximum amount of energy from the sun, while the efficient black polyester powder-coated absorber maximises the transfer of available solar energy.

The 302 and 303 J and the J Free Heat systems can be installed with the HartStat OTP (over-temperature protection) system to prevent overperformance during periods of higher solar radiation and lower hot water draw-off.

The tank features **Solahart Super-Shield®** enamel for enhanced protection and a protective sacrificial anode to improve the tank's life. Free Heat models also feature a larger anode for enhanced tank protection.



Enhanced corrosion protection to extend the life of the tank.

Frost Resistant: Indirect or closed-circuit systems circulate an anti-freeze fluid to heat water 'indirectly' via a heat exchanger, which makes them suitable for frost or harsh water chemistry regions.⁽¹⁾

How you benefit:



HOT WATER IN ANY WEATHER

Electric or gas boosting for hot water regardless of the weather



OPTIMAL PERFORMANCE

Our most popular system, designed for medium to high solar gain areas.



LOW MAINTENANCE

Elegant simplicity provides efficiency, reliability and low maintenance.



REDUCED ENERGY USE

Water heating energy use may be reduced by up to 65% and could save up to 0.9 to 2.4 tonnes of CO₂ emissions per annum when replacing an electric water heater.⁽²⁾



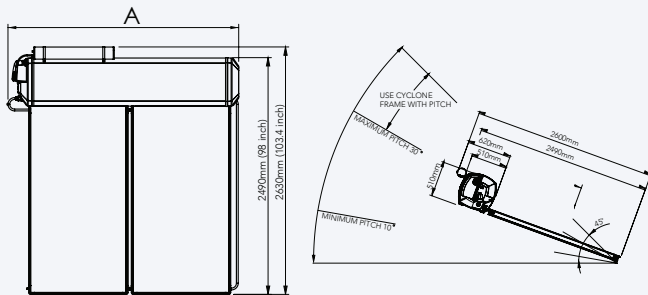
SOLAHART WARRANTY

5-year and 10-year warranty available.⁽³⁾

J INDIRECT SYSTEMS

Systems		151J	181J	302J	303J	Collector		J Collector
Tank model	Standard	150J	180J	300J		Dimensions and Weights		
	Free Heat	-	180F	300F		Aperture (heating) area	m ² / ft ²	1.87 / 20
Collector	Model	J			Length	mm / in	1943 / 76.5	1027 / 40.5
	Number	1	1	2				
HartStat over-temp. protection (OTP)		-	-	Optional	Optional	Weight empty (collector only)	kg / lbs	43 / 95
Capacity		Storage capacity		300 / 80		Weight full (incl fittings & pipe work)		49 / 108
litres / US gal		150 / 40	180 / 48	300 / 80		Capacity and Pressure		
Boost capacity		75 / 20	90 / 24	150 / 40		Capacity	litres / US gal	3.8 / 1.0
Dimensions and Weights (incl fittings & pipe work)								
Tank Only (No OTP)								
Weight (empty)	kg / lbs	61 / 135	71 / 157	107 / 236		Materials		
Weight (full)		218 / 481	259 / 571	417 / 919		Absorber surface	Black polyester powder coat	
System (No OTP)								
Weight (empty)	kg / lbs	107 / 236	117 / 258	196 / 432	240 / 529	Absorber material	Steel	
Weight (full)		269 / 593	311 / 686	515 / 1135	564 / 1243	Riser material	Steel	
A - Width ⁽⁴⁾	m / in	1.40 / 55.2	1.62 / 65.8	2.43 / 95.7	3.38 / 133.1	Number of risers	35	
						Tray material	0.7 mm Aluminium	
						Insulation material (base)	38 mm polyester blanket	
						Glass	3.2 mm tempered low iron	

J System Dimensions



The J and J Free Heat systems can be installed as a solar pre-heater with an in-line Solahart gas booster water heater. Refer to the Solahart gas booster specification sheet for further details on the gas booster.

The 150J and 180J Free Heat models are not available in Australia.

Electric Boost Specifications

Heating unit type	Copper sheath immersion element			
Supply voltage	220 V - 250 V			
Recovery rate @ 240 V and temperature rise of:				
Element Rating	kW	1.8	2.4	3.6
Current	Amps	8	10	15
30°C Temp rise	litres per hr	51	68	103
40°C Temp rise		39	52	77
50°C Temp rise		31	41	62

Water Supply

TPR valve setting	kPa / psi	1000 / 145
Expansion Control Valve (ECV) setting		850 / 125
Max. supply pressure with ECV		680 / 100
Max. supply pressure without ECV		800 / 115
Water connections	cold	Rp 3/4
	hot	R 1/2

ENERGY TIP

When installing your solar water heater, install minimum 3-star rated shower roses and flow restrictors to your taps if you don't already have them. Doing this will not only save water but make your solar savings go further.

Specifications and designs included in this data sheet are subject to change without notice.

- ⁽¹⁾ Harsh water regions - the Solahart warranty may not apply if the water heater is connected to a water supply which has a Total Dissolved Solids content >2500mg/L. If the water supply is scaling with a saturation index >0.8 a low watts density heating unit must be used, or is corrosive with a saturation index <-1.0 a corrosion resistant heating unit must be used, for warranty to apply to the heating unit.
- ⁽²⁾ Energy savings of up to 65% and CO₂ savings of up to 0.9 and 2.4 tonnes shown are for Australia and are based on Australian Government approved TRNSYS simulation modelling of a Solahart 302J and using a medium load in climate Zone 3 in Australia and apply when replacing an electric water heater. Any savings will vary depending upon the location within the country of installation, type of Solahart system installed, orientation and inclination of the solar collectors, type of water heater being replaced, hot water consumption and fuel tariff. Maximum financial savings off your hot water bill are achievable when replacing an electric water heater on continuous tariff. Refer to solahart.com.au for more information.
- ⁽³⁾ Solahart Warranty Details: Free Heat 10/5/5 warranty, 10 year cylinder and collector supply, 5 year parts supply, 5 year labour; 5/5/5 warranty, 5 year cylinder and collector supply, 5 year parts supply, 5 year labour; applies only when installed as a complete new system.
- ⁽⁴⁾ For servicing and safe access, a space equal to the tank length should be left on the water connection end of the system and 1m (40in) should be left on the three other sides of the installation.