



**HP Plus**



# More hot water for the whole pack

Higher efficiency  
Faster recovery  
Super quiet



UP TO  
**73%**  
CHEAPER\*  
TO RUN

\* compared to electric hot water systems



# Introducing the next generation in energy efficient hot water systems – WULFE® HP Plus

The WULFE® HP Plus is a cutting-edge air source heat pump that combines efficiency, innovation, and sustainability like never before. Designed with Australian families in mind, WULFE® HP Plus delivers performance and reliability, setting a new standard in efficiency.



## Key features

**Environmentally friendly:** Say goodbye to harmful refrigerants! WULFE® HP Plus utilises natural R290 refrigerant, making it a responsible choice for the planet, a choice customers demand.

**Efficiency redefined:** Powered by inverter technology, the WULFE® HP Plus ensures faster recovery times and higher efficiency, so you can enjoy hot water whenever you need it.

**Whisper-quiet operation:** Experience peace and tranquillity with WULFE® HP Plus's super-quiet operation. Emitting just 42dBA during operation, guarantees your customer peace and neighbourly harmony.

**Innovative design:** Two years in development and decades of experience makes the HP Plus the clear choice for Australian homes.

**Versatile capacity:** Available in 200L and 330L models, WULFE® HP Plus offers the largest capacity range on the market, catering to families of all sizes with ease.

**User-friendly interface:** Intuitive TFT LCD control screen makes customising the operation of the WULFE® HP Plus unit a breeze.

**Extended lifespan:** With triple full-length anodes, WULFE® HP Plus ensures maximum durability and longevity, giving you peace of mind for years to come.

**ACTIV8 technology:** The patented ACTIV8 app for iOS and Android takes the hard work out of claiming government rebates – claim onsite, on your phone; without any paperwork!

**Customisable modes:** Choose from four operating modes to suit your customer's preferences and lifestyle; All Electric, Fast Recovery, Eco, and Mute mode for silent overnight heating – wake to a hot shower every morning!

## Why choose WULFE® HP Plus?

Australian plumbers trust WULFE® for industry-leading innovation and quality manufacture. With WULFE® HP Plus, you can offer your customers a hot water solution that exceeds expectations, backed by reliability and performance.

## Experience the future of hot water, today!

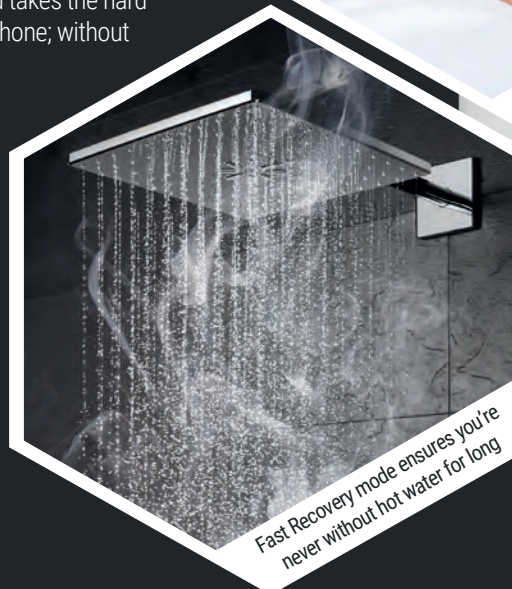
Join the leader of the pack and make the switch to WULFE®! Contact us today to learn more about how the WULFE® HP Plus can transform your customer's hot water experience.



TFT LCD screen for easier operation in any lighting condition



Mute mode for silent overnight heating and hot showers every morning



Fast Recovery mode ensures you're never without hot water for long



IMK22861  
AS/NZS 2712



WaterMark  
WM-022861  
AS 3498



**HIGHER EFFICIENCY**

**FAST RECOVERY**

**MUTE MODE**

**SMART BOOST**

**ECO POWER**

**LOW NOISE**  
42 dBA

**MICROCHANNEL CONDENSER**

**TRIPLE ANODES**

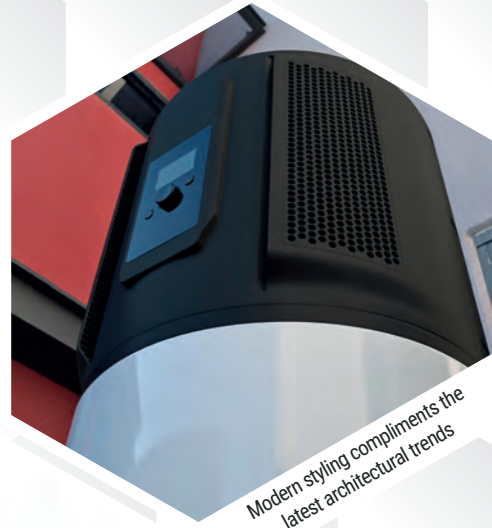
**FROST PROOF**

**OVERHEAT PROOF**

**ANTI FREEZE**

**LEGIONELLA PROOF**

**EXPRESS ACTIV8**



Modern styling compliments the latest architectural trends



Intelligent inverter technology for Auto, Mute, Eco and Fast Recovery modes

UP TO  
**73% CHEAPER\***  
TO RUN  
\* compared to electric hot water systems

**WULFE**  
SMARTER HOT WATER TECHNOLOGY  
**HP Plus**



Tap into your solar power and save even more off your water heating bills

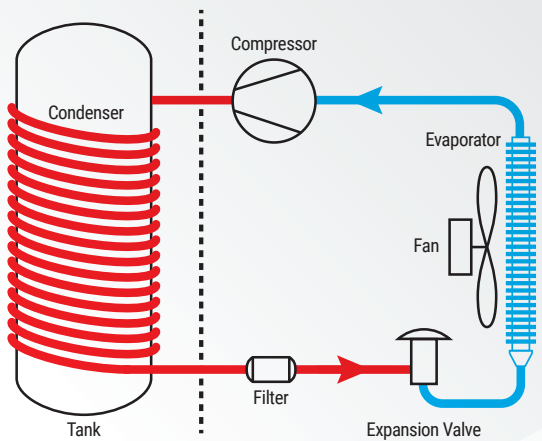
# Enjoy free hot water — with your solar PV system

WULFE® HP Plus is the perfect partner for a roof top solar power system. Store up to 21kW\*\* of heat energy in a WULFE® HP Plus heat pump tank ready to use when the sun has gone down.

Whether your customer's already have solar power, or are considering it in the future, WULFE® HP Plus is the clear choice to ensure a low energy home.

The HP Plus advanced control system is equipped with an automatic timer that allows customers to maximise their solar power utilisation and a second timer allows for an early morning boost to ensure they never run out of hot water.

\*\* based on the energy required to raise 330L of water from an inlet temperature of 10°C to 65°C final temperature



## How does a heat pump work?

To understand the concept of heat pumps, imagine a refrigerator working in reverse.

While a refrigerator removes heat from an enclosed box and expels that heat to the surrounding air, a heat pump takes the heat from surrounding air and transfers it to water in an enclosed tank.

Heat pump technology makes efficient use of the heat in the surrounding air, even at temperatures as low as  $-7^{\circ}\text{C}$ .

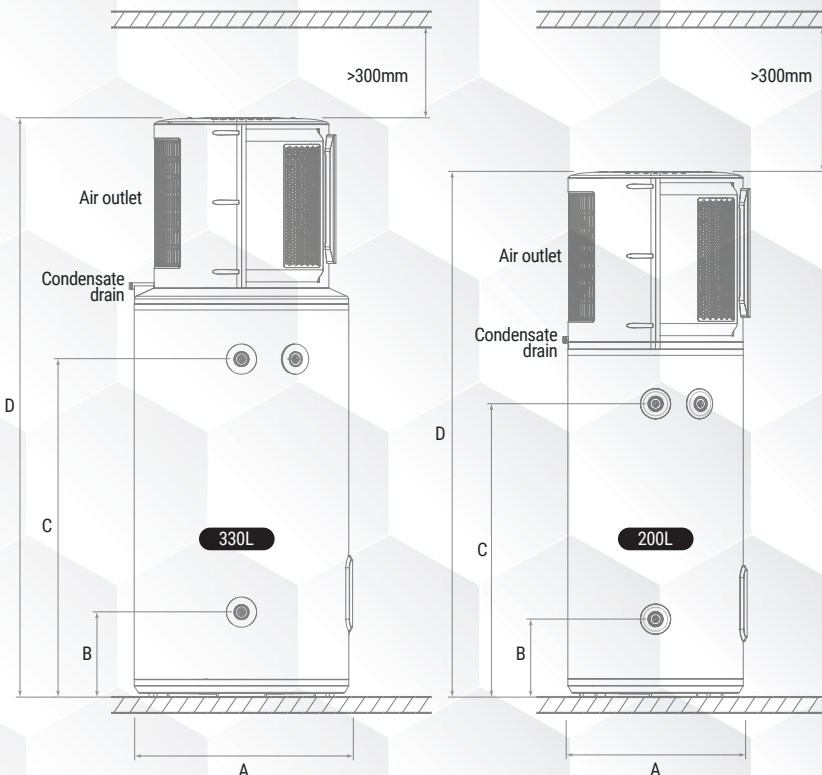
In fact, the WULFE system is so efficient that it can convert 1kW of electricity into over 4kW of heat.

Model	WPW200M9	WPW330M9
Total water capacity	190L	330L
Rated voltage / frequency	220-240V/50Hz	220-240V/50Hz
Tank max pressure	700kPa	700kPa
Corrosion protection	Magnesium rod	Magnesium rod
Waterproof grade	IPX4	IPX4
Performance (20°C/15°C Ambient air temperature, 15°C -55°C water temperature)		
COP*1@ 20°C/15°C	4.16	4.04
Power input of electric element	1500W	1500W
Rated power input of heat pump	780W	820W
Maximum power input of heat pump	1500W	1500W
Maximum power input	1500W	1500W
Average heating capacity by heat pump	3200W	3300W
Default temperature setting	60°C	60°C
Temperature setting range - with heater	60°C - 75°C	60°C - 75°C
Max temperature of the heat pump only	65°C	65°C
Max working pressure of refrigerant	1.0/3.3MPa	1.0/3.3MPa
Refrigerant type / weight	R290/0.42kg	R290/0.47kg
Sound pressure level*2 @ 2m	42dB(A)	42dB(A)
Ambient temperature for heat pump and element	-7~45°C	-7~45°C
Ambient temperature of heat pump	-7~45°C	-7~45°C
Water inlet and outlet connection	Rp 3/4"	Rp 3/4"
TPR valve connection	Rp 3/4"	Rp 3/4"
Drain & Water inlet connection	Rp 3/4"	Rp 3/4"
Product Dimensions	580 x 620 x 1746mm	710 x 740 x 1923mm
Packing dimension with pallet	695 x 695 x 2060mm	745 x 745 x 2263mm
Net/Gross weight	93/119kg	119/148kg
Filled weight of the appliance	282kg	449kg

\*1 The COP was measured under test conditions with an ambient air temperature of 20°C/15°C (Dry Bulb/Wet Bulb) and heating of the water from 15°C to 55°C during water heater operation.

\*2 The noise level was measured at 2m from the water heater during a Noise Test conducted to Standard GB/T 23137 in a hemi-anechoic chamber within a laboratory.

Model	A	B	C	D
WPW200M9	620	258	970	1746
WPW330M9	740	282	1119	1923



Available from: