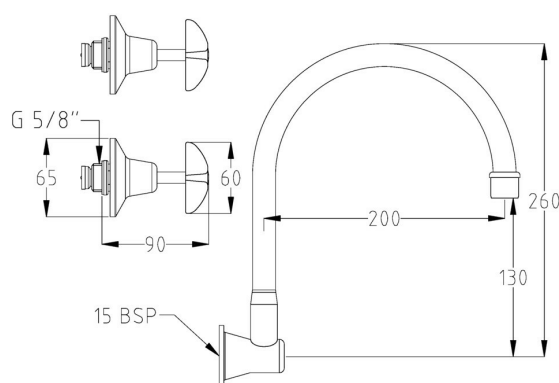


Vandal Resistant CP-BS J/V Wall Sink Set (NSW) with 120H Swivel Gooseneck & Aerator

Product Code: 49949



Our range of Galvin Vandal Resistant Tapware is manufactured to comply to all relevant standards. The range is designed primarily for use in busy public areas where a long lasting tap is essential.

Features

- Vandal resistant handle featuring a locking ring to secure the handle to the spindle which may only be removed using the key provided
- Standard with jumper valve
- Half turn ceramic disc available on request
- Chrome plate finish for easy cleaning and added durability
- 200 x 120 gooseneck swivel spout
- Vandal resistant aerator
- Complies with NSW Education EFSG Guidelines
- Dual WELS Rating (6 and 5 Star Rating)

Note: This product is registered via WELS with two performance ratings to ensure its suitability across a diverse array of applications. Installed in the product is the 6 Star Rating flow regulator for optimal performance. For added flexibility, the additional flow regulator is also provided within the carton. You can easily switch between regulators as needed, all while preserving the product's WELS certification. Refer to the installation instructions for a comprehensive guide on changing the flow regulator.

Technical Information

- WELS: 6 Star Rating (3.5L/min) or 5 Star Rating (6.0L/min)
- Nominal Flow Rate (LPM): 3.39 or 5.8
- WaterMark: AS/NZS 3718 Lic. WMKA0034
- Inlet: 1/2" BSP - Female
- Outlet: Aerator
- Headwork: Jumper valve
- Working Pressure Range (kPa): 100 Min - 500 Max
- Working Temperature Range (°C): 5 Min - 60 Max
- Construction: Brass
- Finish: Chrome

Alternative Product Options

- [174.51.22.03](#) Vandal Resistant CP-BS Lead Safe™ J/V Wall Sink Set with 150H Swivel Gooseneck & Aerator (NSW)



Environmental Sustainability

We are ISO 14001 certified and take sustainability seriously. Our products are environmentally responsible designed to be healthier for users, save water and/or energy, and minimise carbon footprint. Our target is to reduce our carbon footprint by 25%, and the use of non-recyclable/non-compostable materials across the company (e.g. plastics) by 50%.

Warranty

Galvin Engineering products are covered under our Manufacturer's Warranty. Galvin Engineering products must be installed in accordance with the installation instructions and in accordance with AS 3500 and NCC Volume Three, relevant Australian Standards and local authorities applicable to product being installed. Water and electrical supply conditions must also comply to the applicable national and/or state standards, failing to comply with these provisions may void the product warranty and affect performance of the product.

Please visit www.galvinengineering.com.au to view the full warranty, our Installation Compliance and Maintenance & Cleaning information as well as any other additional information.

While all reasonable care has been taken in compiling the information in this document, the designs, dimensions and products shown are indicative only and should not be relied upon without our prior approval. Due to our policy of continuous development, we reserve the right to alter any details of specifications or products without notice. All information, drawings, technical specifications and product designs remain the property of Galvin Engineering Pty Ltd.

Within Australia: **1300 514 074**

Outside Australia: P: +61 (0)8 9338 2344

sales@galvinengineering.com.au

www.galvinengineering.com.au



**A family
owned
Australian
business**

